

BRUCE 布鲁斯

BRUCE 布鲁斯

400-8890-100
www.chinabruce.cn



扫一扫
关注布鲁斯
官方公众号

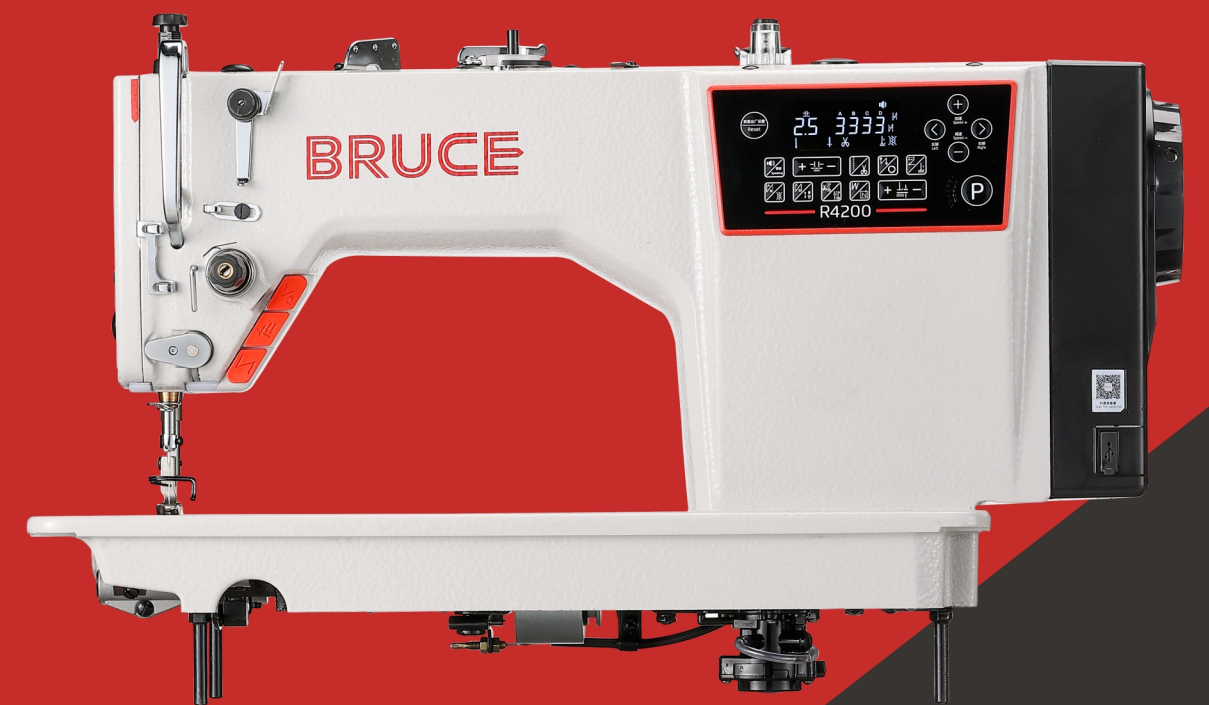


扫一扫
关注孝心缝慈善
基金会官方公众号

R4200

高速步进电脑平缝机

High-speed Stepping Motor Computerized Lockstitch Sewing Machine



怕跳针 · 怕断线 · 就用布鲁斯
NO BREAK · NO SKIP

台州市布鲁斯缝制设备有限公司
TaiZhou Bruce Sewing Machine Co.,Ltd.
浙江省台州市椒江区东海大道东段1008号2号楼
No.2 building No.1008 Eastern Section East Sea Road Jiaojiang
District Taizhou, Zhejiang.



怕跳针 · 怕断线 · 就用布鲁斯
NO BREAK · NO SKIP

R4200

品名：高速步进电脑平缝机
High-speed Stepping Motor Computerized Lockstitch Sewing Machine

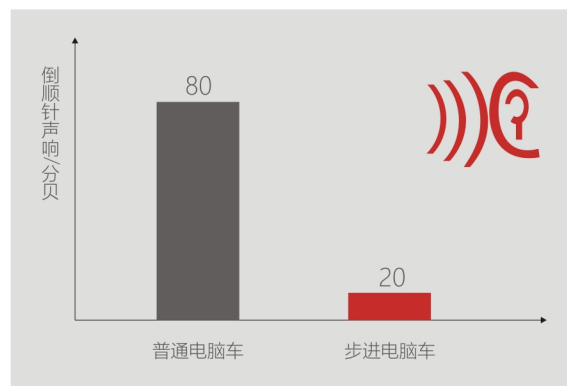


针距精准、线迹均匀

Accurate stitch length and even stitch

步进控制针距，调节精度可达0.1mm，且可设定密码锁定针距大小，保证线迹疏密一致。

Step motor control the stitch length, the adjustment accuracy of the stitch can reach 0.1mm, and the password can be set to lock the stitch length to ensure that the stitches are dense and consistent.

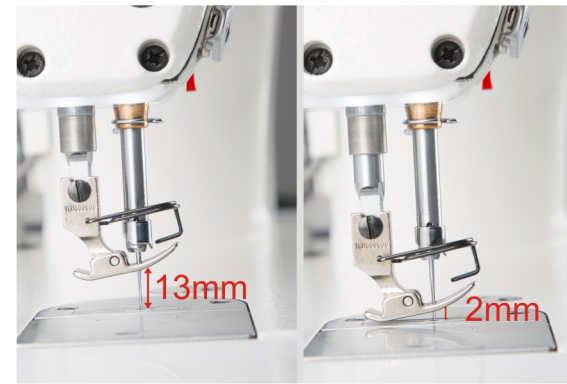


倒缝无声、安静舒适

Back seam is silent, quiet and comfortable

采用先进的步进技术，打倒缝时没有声音，给您安静舒适的工作环境。

Using advanced stepping technology, there is no noise when knocking down the seam, giving you a quiet and comfortable working environment.

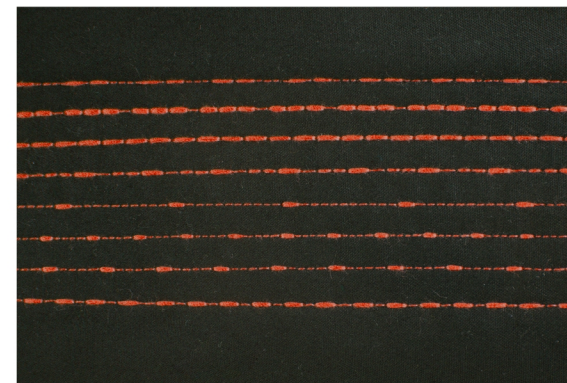


步进抬压脚、高度可调

Step motor control presser foot lifting, height adjustable

采用步进控制抬压脚，操作工可根据不同面料厚薄以及工艺要求，可在操作面板上直接调节中途抬压脚高度，高度可调范围0-13mm。

The presser foot is lifted by step motor. The operator can directly adjust the height of the presser foot in the operation panel according to the thickness of different fabrics and process requirements. The height is adjustable and ranges from 0 to 13mm.

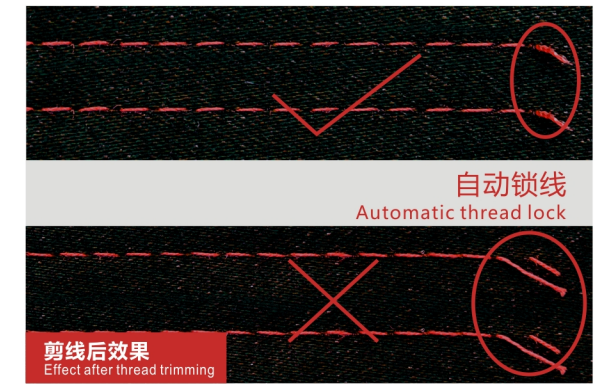


可缝制多种花样线迹

The stitches can be variety of patterns

操作工可根据服装工艺要求，选择不同花样线迹缝纫，且可编辑所需花样效果。

The operator can choose different patterns according to the requirements of the clothing craftsmanship, and can edit the desired pattern.



车缝线头短，无需修剪

Short thread tail, no need extra trimming

缝纫结束后线头仅有3.5mm，无需修剪线头，节省人工。

The thread tail is only 3.5mm after sewing, no need to extra trimming, saving labor.



语音导航、USB接口

Voice navigation, USB port

全系列标配语音导航，每一步都有语音提示，操作简便；同时还配有USB接口，可以用于充电及软件升级。

The whole series is equipped with voice navigation, with voice guidance at every step, which is easy to operate; and it is also equipped with a USB port, which can be used for charging and software upgrades.

技术参数 Specification

			(mm)	(mm)	(S.p.m)				(mm)	(kg)
R4200-D	DB×1 11-18#	2	5	5-13	5000	●			690×295×550	38.6/44.6
R4200-DH-M	DB×1 11-18#	2	5	5-13	5000	●			690×295×550	38.6/44.6
R4200-DH	DP×5 18-21#	2	5	5-13	3500	●	●		690×295×550	38.6/44.6